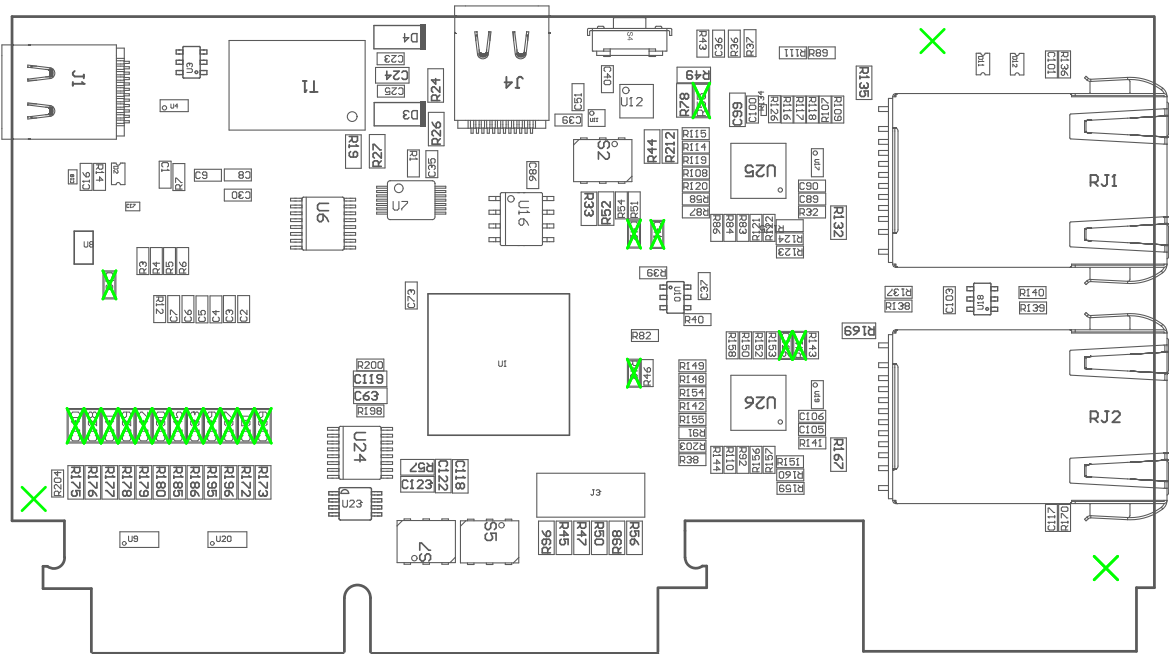
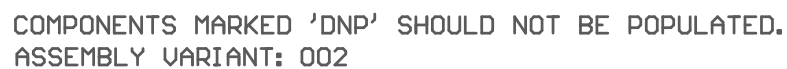


- ZZ1 ■Install label in silkscreened box after final wash. Text shall be 8 pt font. Text shall be per the Label Table in the PDF schematic.
- ZZ2 ■These assemblies are ESD sensitive, ESD precautions shall be observed.
- ZZ3 ■These assemblies must be clean and free from flux and all contaminants. Use of no clean flux is not acceptable.
- ZZ4 ■These assemblies must comply with workmanship standards IPC-A-610 Class 2, unless otherwise specified.



COMPONENTS MARKED 'DNP' SHOULD NOT BE POPULATED.
ASSEMBLY VARIANT: 002

PCB VIEWED FROM TOP SIDE	BOARD #: MCU114	REV: E1	SUN REV:
	TID #: N/A		
PLOT NAME = Top Assembly Drawing	GENERATED : 6/13/2023 7:33:41 PM	TEXAS INSTRUMENTS	



	BOARD #: MCU114	REV: E1	SUN REV:
	TID #: N/A		
PLOT NAME = Bottom Assembly Drawing	GENERATED : 6/13/2023 7:33:41 PM		TEXAS INSTRUMENTS